



AMANORA[®]
GATEWAY
TOWERS II

It's almost unattainable, yet desired by all.
It's a relationship yearned by all, yet enjoyed only by the chosen ones.



Luxury,

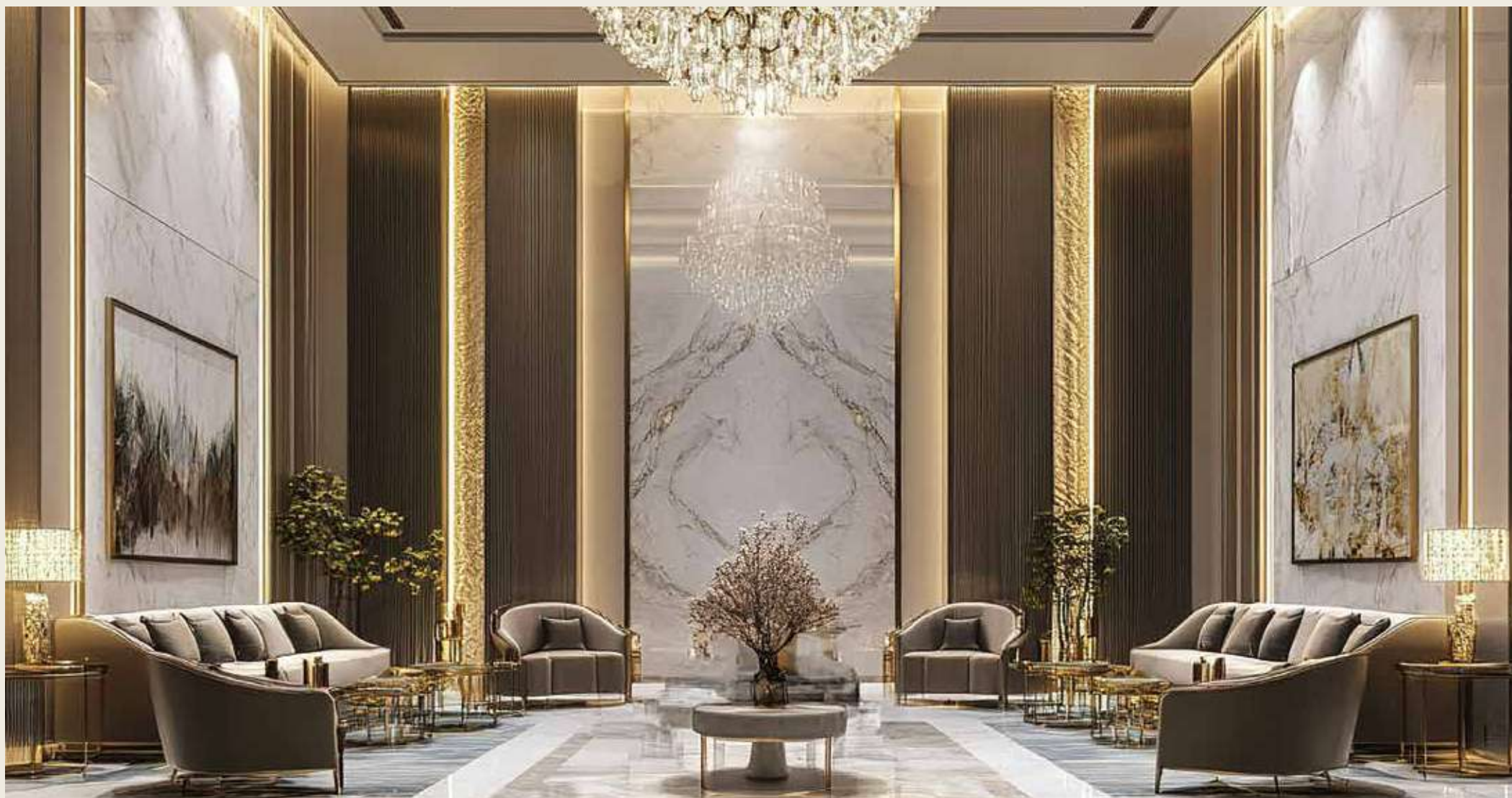
with a vast meaning in itself,
appeals differently to all.
It's an experience, a reward,
maybe an opportunity too.

But for a select few, it becomes
a habit. A habit such, one should
never have to quit. A habit that
seeks a new epitome each time
it comes close.



FOR THE HABIT CALLED LUXURY

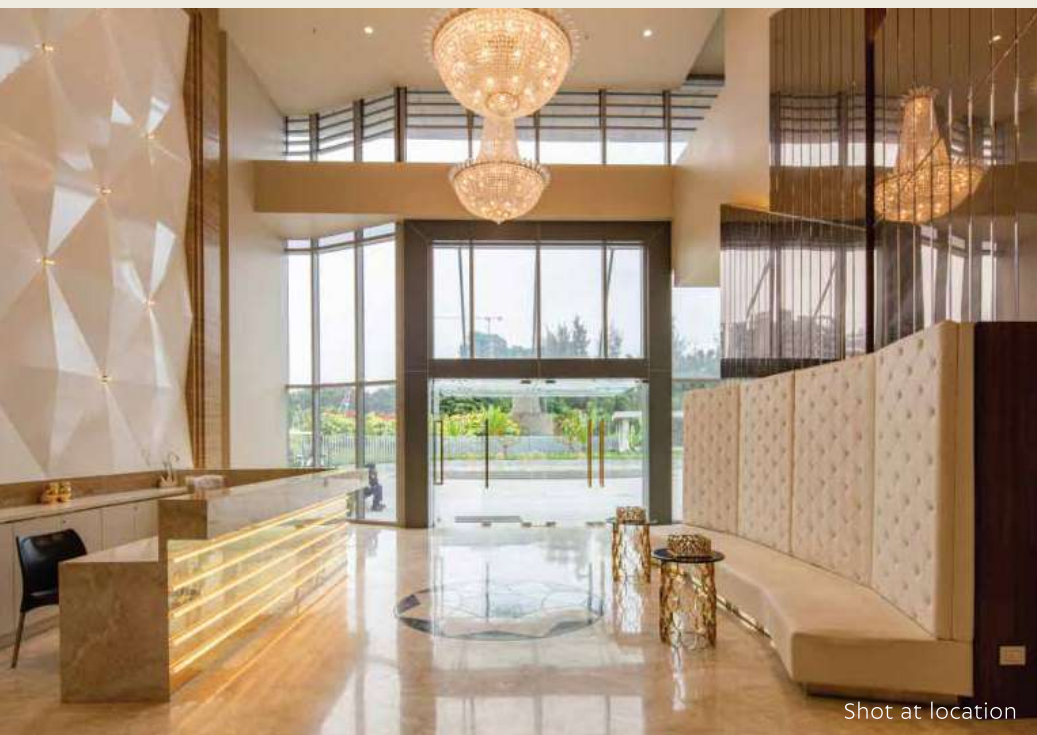
Because if it drives you towards a life bigger than your dreams, taller than benchmarks and wider than boundaries, it's a habit you seek and a habit we build.



Welcome to

AMANORA[®] GATEWAY TOWERS II

Pune's biggest revolution
in luxury and its abundance,
where seekers like you live their
habit, every day.



AN ODE TO THE ORIGINAL

The best today, is unimaginable without the best that preceded.

Nearly a decade ago, Amanora along with its team of visionary artists, created the first Gateway Towers and dramatically changed East Pune's skyline forever. An architectural genius and an artist's daydream, Gateway Towers stirred a wave of awe around the city.

Building on its truly towering legacy, we now embark on complementing it with its twin - adding another, brighter star to the skyline and to the craft of construction.



THE SHAPE OF TOMORROW

Arching over our own peak was a tall endeavour,
but we reached a new height nevertheless.
Gateway Tower 101 is, in all its glory,
the greatest of our times.

Soaring to an altitude of 175 metres,
the edifice stands as the highest-ever
marvel the city has witnessed.
And as impressive as this is,
there's much more to this architectural revolution.

AMANORA®
GATEWAY
TOWERS II



Actual image + Artist's impression

ISING ABOVE, REACHING BEYOND.

Amanora Park Town's newest benchmark, Gateway Towers II is here to redefine and refine every other expression of "luxury". Welcome to the next chapter!



FINER THAN THE FINEST

Being the best can get boring without a challenge. We pride ourselves in creating the finest of luxuries and now it's time to outdo it.

Unveiling Gateway Towers II, a world that brings you the finer of everything fathomable. Finer architecture, greater designs, superior specifications, and stronger materials just start the list at this monumental creation.





THE DOOR TO YOUR HOME OPENS A GATEWAY TO SUPERIORITY

Walking into a residence at Gateway Towers II, lets you experience an unprecedented living that begins where your expectations end.



Finely crafted for your stature, a home here promises spaces that curate the ultimate standards of design, features, utility, and specifications that you deserve.

Well-crafted 2, 2.5, 3, 3.5, 4, 4.5 Bed & Duplex Residences

Cohesive designs for ample space and privacy

Expansive views of the horizon on all sides

Fantastic ventilation and natural light

Balconies that seamlessly integrate indoors and outdoors

Individualised green spaces along the facade of the tower



THE MAKERS OF AMANORA GATEWAY TOWERS II



RICHARD SOON

P&T Consultants Singapore (Architects)

Gateway Towers II is not just a construction, it is our craftsmanship at its best. It's the one that extends its excellence to those looking for a grander lifestyle.



WANIDA YENSUK

Total Design Solutions (Interior Design)

A structural marvel on the outside, Gateway Towers II is crafted with interiors that are just as elegant, luxurious, and equally thoughtful.



UMESH JOSHI

JW Consultants (Structural Design)

Gateway Towers II carries forward the legacy of Gateway Towers I. Now, it further elevates to being an unmatched creation – the tallest-ever tower in Pune.





KEY PLAN

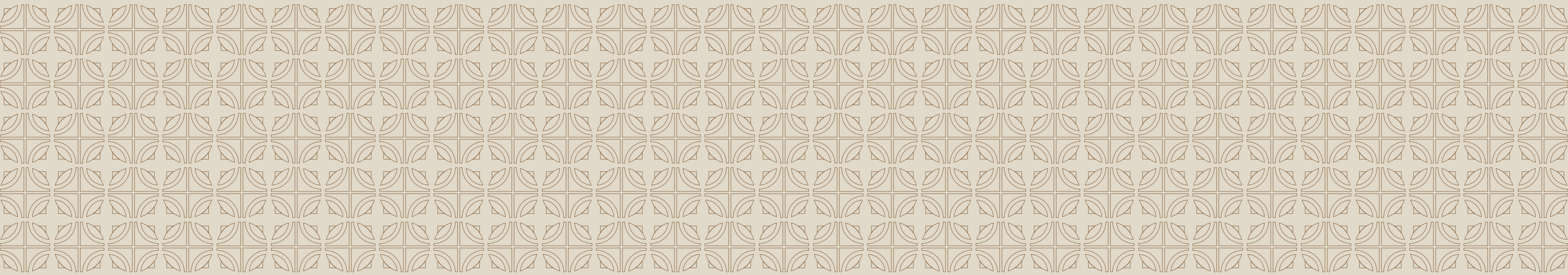
- 1. PLAY AREA
- 2. GARDEN
- 3. SENIOR CITIZENS' ZONE
- 4. AMPHITHEATRE (LAWN)
- 5. HAMMOCK GARDEN
- 6. TROPICAL POOL
- 7. WHIRL POOL
- 8. KIDS' POOL
- 9. CRICKET NET
- 10. PICKLEBALL COURT
- 11. HALF BASKETBALL COURT
- 12. SAND PIT
- 13. PET PARK
- 14. FAMILY PAVILION
- 15. BLUE ORCHID CLUB
- 16. SAPHIRE 102
- 17. SAPHIRE 103

FOR THOSE HABITUAL TO GREAT HEIGHTS

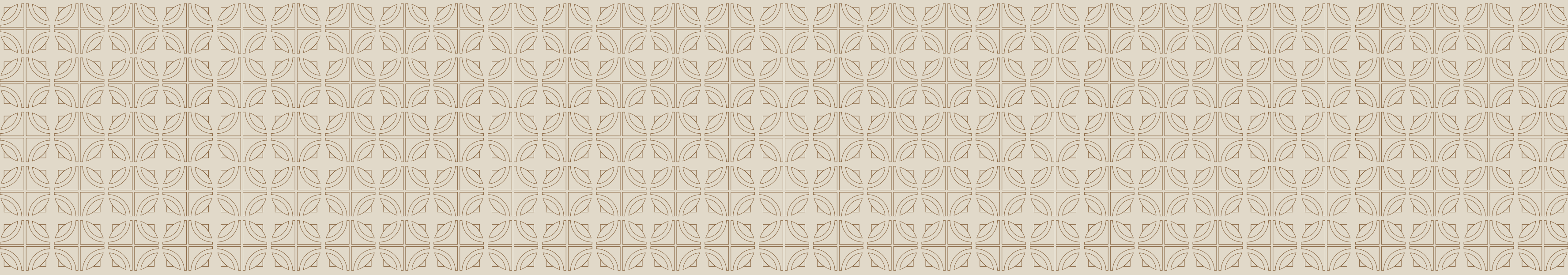
Those who look up, reach higher.
And just for them, we've now
raised the bar to an all-time high.

Pune, meet the first and only
tower in the city that rises to an
awe-inspiring height of 175
metres. With craftsmanship that
knows nothing below perfection,
and finesse sharpened over the
years, Amanora is crafting the
second rendition of its godly
arched tower – higher and
heightened.





A red carpet welcome is a rare occurrence.
Here, it becomes a habit.





A GRAND ENTRY BEFORE THE WELCOME

Setting the tone right at the outset, Amanora Gateway Towers II enthralls everyone with a drop off zone that raises the bar and the expectations.



ENTRANCE LOBBY AT TOWER 101

Beginnings don't get more luxurious.
Gateway Towers II welcomes you with its
grandeur right at its doorstep!



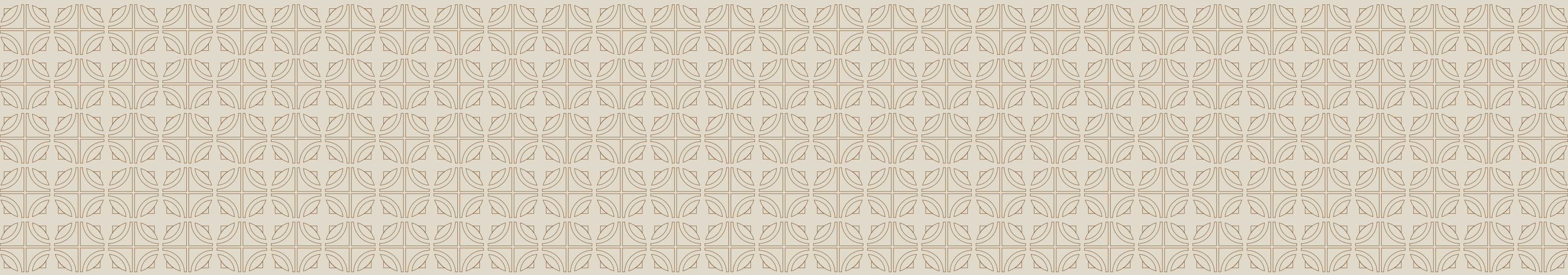
DROP OFF ZONE AT T102 & T103

Just like T101, the twin towers have a drop off zone that is stunning in its architecture and welcoming in its vibe.

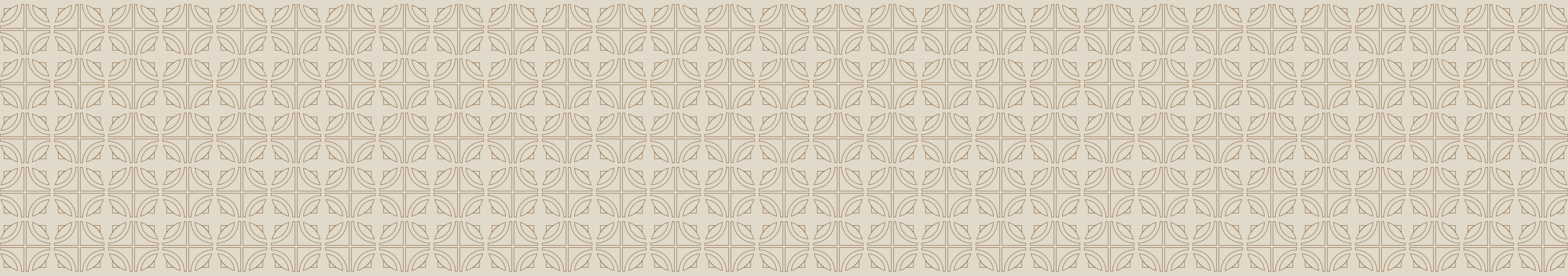


ENTRANCE LOBBY AT T102 & T103

The striking twin towers, T102 & T103, welcome you with an embrace that is awe-inspiring with all its aura.



Being spoilt for choice is occasional.
Here, it becomes a habit.





GROUND LEVEL AMENITIES

LUXURIOUS INDULGENCES
START RIGHT HERE.

When luxury living is a habit, it
deserves spaces that unlock different
aspects of enjoying it. At Gateway
Towers II, the ground level is where
this indulgence begins.



AMENITIES FOR DIFFERENT MOODS & NEEDS

OFFERS SOMETHING FOR EVERYONE IN THE FAMILY

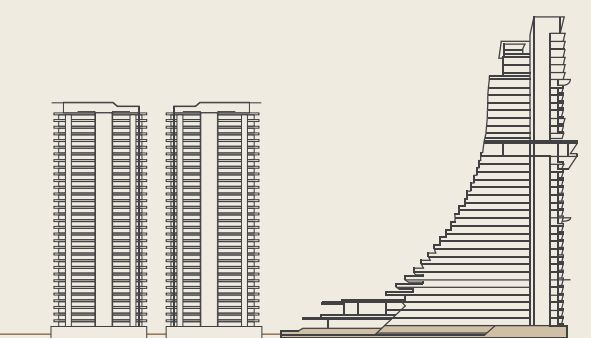
WELL-MANAGED & WELL SPREAD OUT SPACES



BUSINESS LOUNGE

For the ones with grand ambitions, at times, even leisure means business. And we have this masterpiece awaiting them.

Ground Level Amenities





PICKLEBALL COURT

Participate in a passionate game that gets your spirits high and takes the thrills higher.

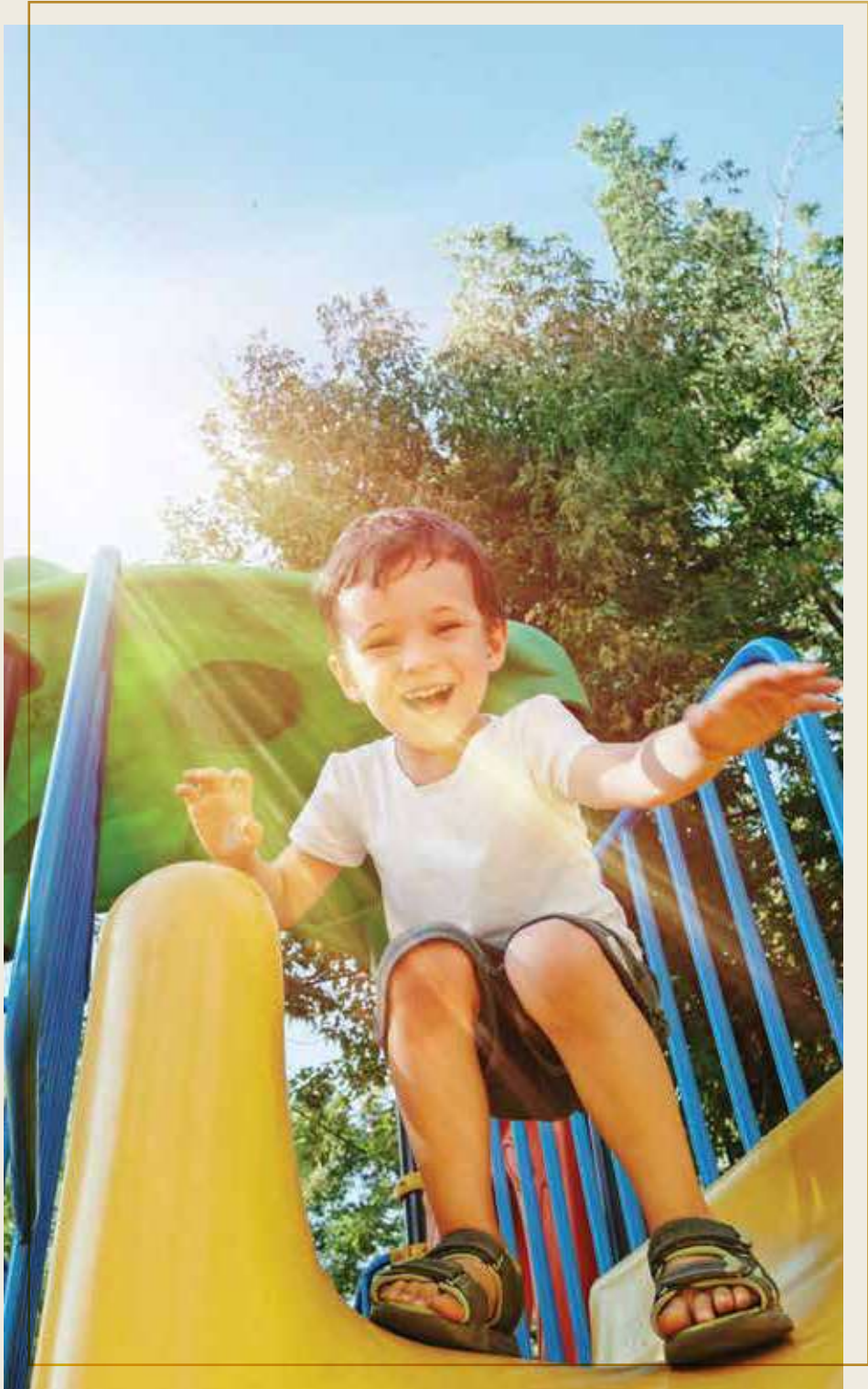
HALF BASKETBALL COURT

Compete in a court that lets you sweat it out, while having fun with your friends.

SAND PIT

Let your little ones sink their feet into the soft and cosy sand for the best play time.





PET PARK
Let your pet play freely in an open space that is ideal for their free spirit.

CRICKET NET
Practise and perfect your 'fours' and 'sixes' in relaxed trainings and competitive matches.

PLAYGROUND
Celebrate childhood in the most active and joyful ways that you like.





PODIUM LEVEL AMENITIES

A LEVEL HIGHER.
A WORLD APART.

—
When luxury living is a habit, it
deserves spaces that unlock different
aspects of enjoying it. At Gateway
Towers II, the ground level is where
this indulgence begins.



A FINE BLEND OF ACTIVE LIVING & LEISURE

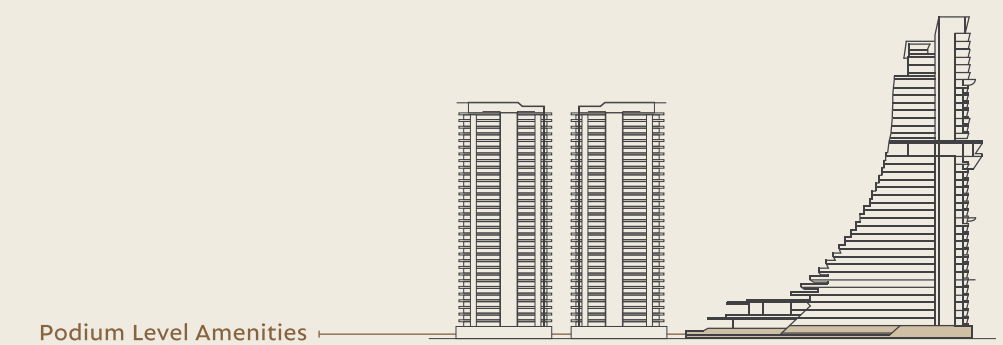
AGE-GROUP SPECIFIC AMENITY SPACES

IDEAL FOR ME-TIME AND WE-TIME



AN EXPANSIVE SWIMMING POOL

Leave behind the tiredness of routines and chaos of the city, as you take a plunge in this massive pool, which lets you find true relaxation.





WHIRLPOOL

A circular shaped pool, it has its own charm, with leisure-filled spaces surrounding it.

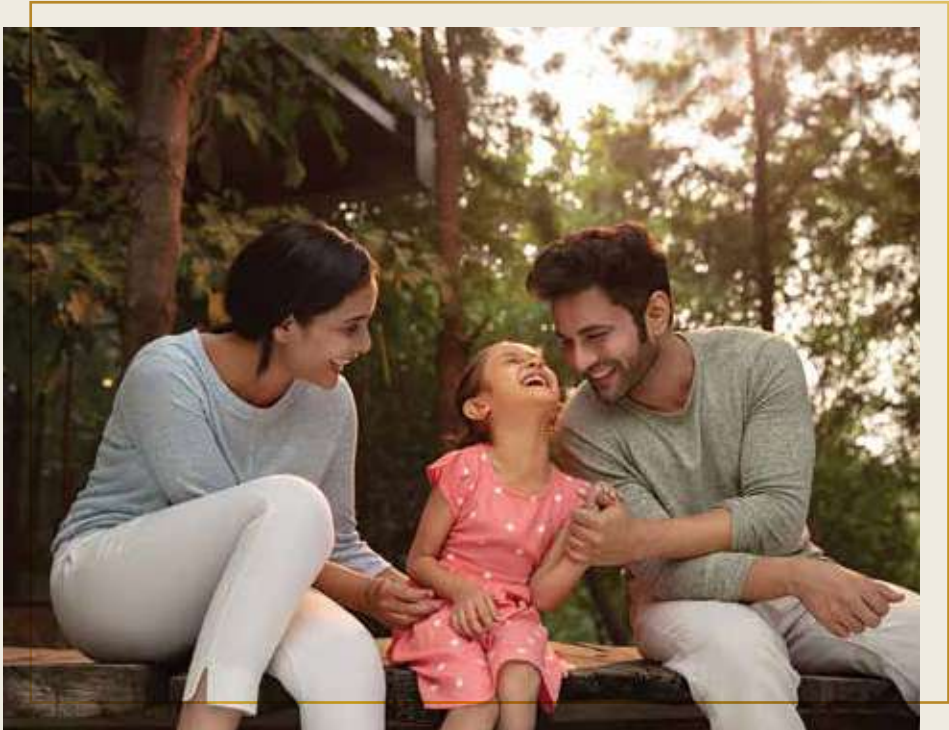
TROPICAL POOL

Peek into the depths of the blue world that welcomes you to relax in its embrace.

KIDS’ POOL

Witness your little ones feel refreshed, as they take a dip into cherishable experiences.





**SENIOR CITIZENS’
ZONE**

Embrace life to the fullest with exclusive spaces to enjoy the golden years.

HAMMOCK GARDEN

Swing in the lap of nature and feel the refreshing breeze in your hair and serenity in your head.

FAMILY PAVILION

Make wholesome memories with loved ones in a space that celebrates family time.



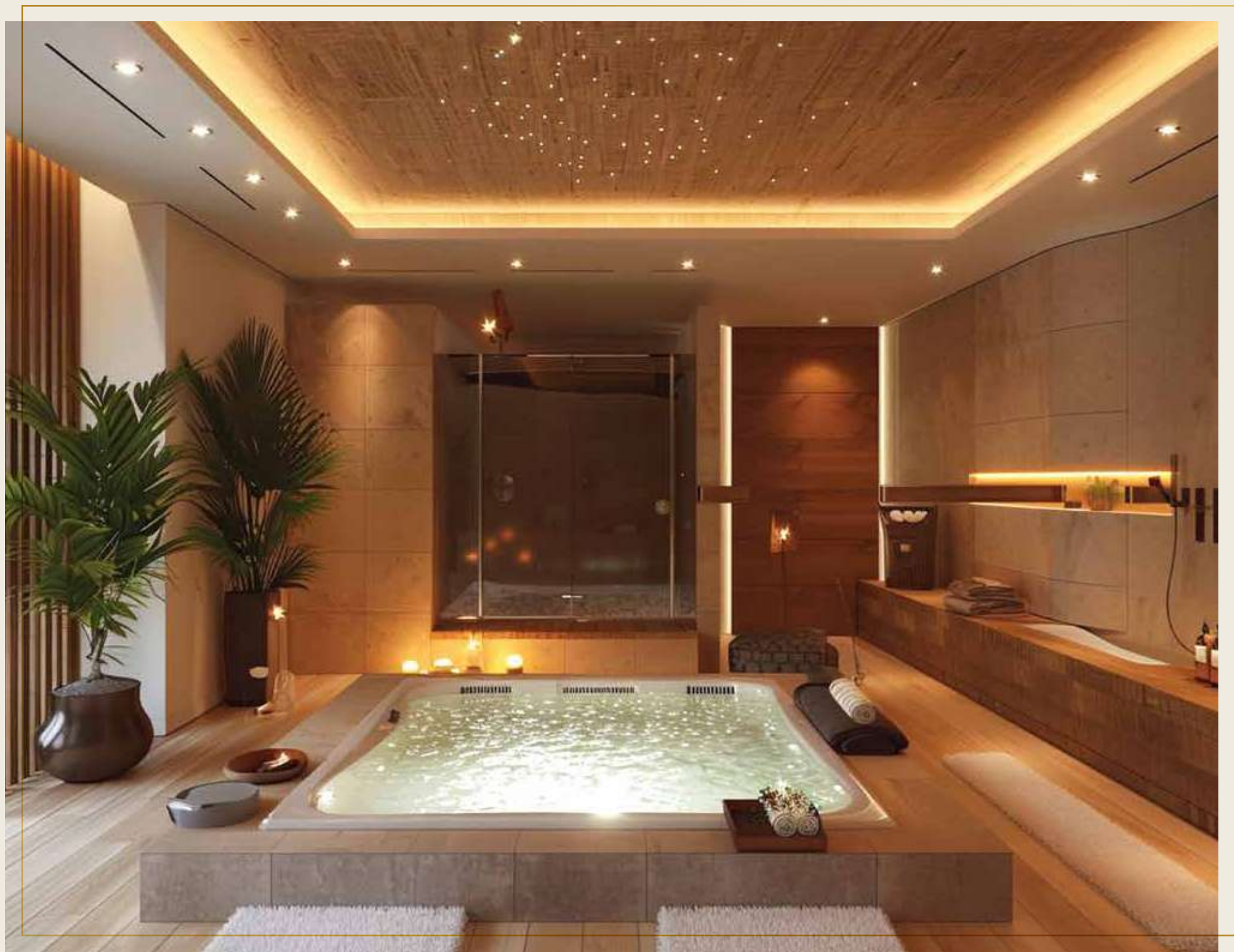


THE OASIS

A PIECE OF HEAVEN ON THE PODIUM

—

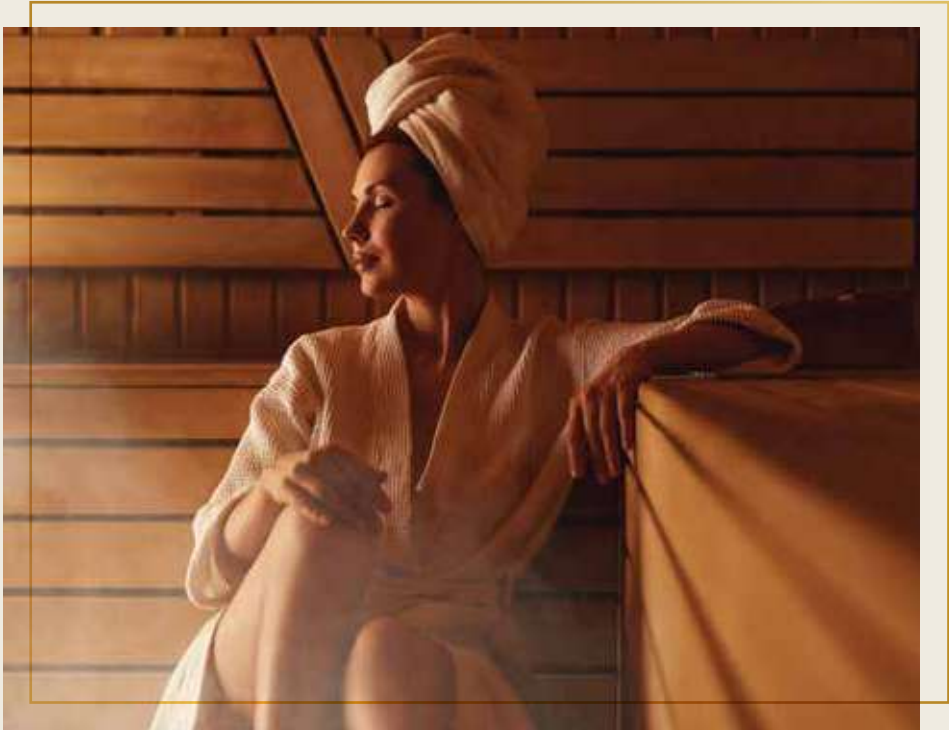
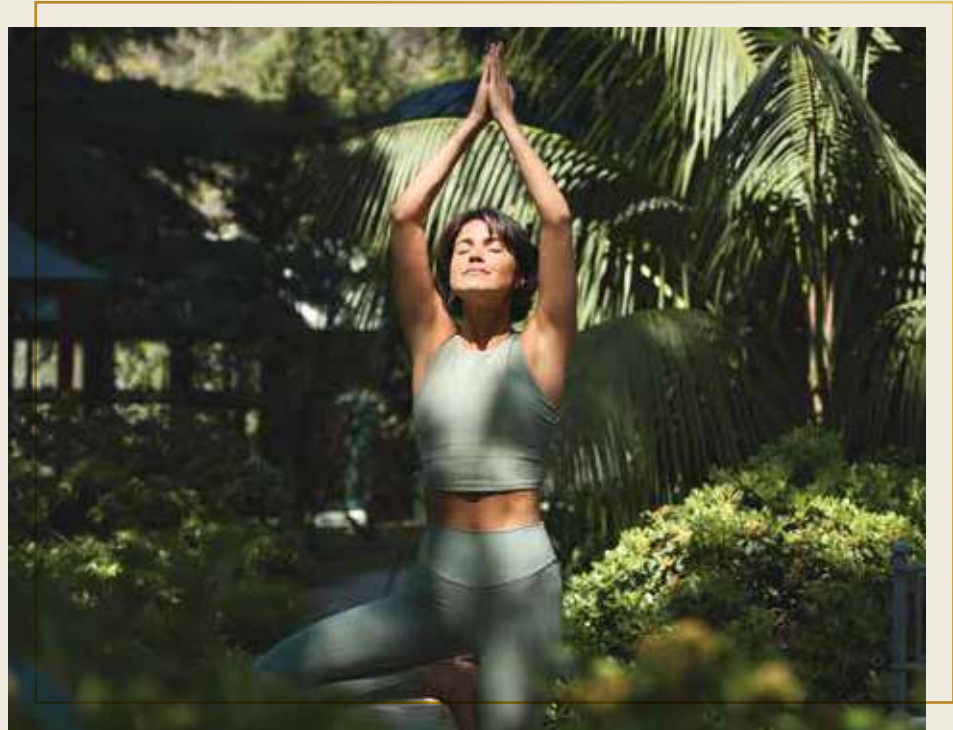
The desire to sweat it out, then find a sense
of calm from within, is rarely satiated.
The Oasis lives up to its name and makes
this rare feeling a reality.



TO FEEL AT PEACE IS
A RARE LUXURY.

Your wellness is not just an amenity, but a lifestyle you deserve. At Gateway Towers II, you are pampered in a constant state of tranquillity.

Here, your post-workout follows the path of an encompassing whirlpool and an embrace that feels like nirvana.



GYMNASIUM

Your body is a temple and a world-class gymnasium is the only way to worship it.

STEAM & SAUNA

Hydrate your body after a long day and feel the peace within.

PLUNGE TUB

Nothing bothers you in this world when you are in a jacuzzi that dissolves all your worries.

YOGA ZONE

Find yourself in the calmness of your mind and the comfort of your body.



BLUE ORCHID CLUB

THE DESTINATION OF LUXE DELIGHTS

Your habits shape your lifestyle, and your home must cater to it. The Blue Orchid at Gateway Towers II houses every niche that fulfils your appetite for a fulfilling lifestyle. Indulge in a million ways to relax, rejuvenate, and refresh yourself with your loved ones.



A GRAND CLUBHOUSE ENRICHED WITH LEISURE

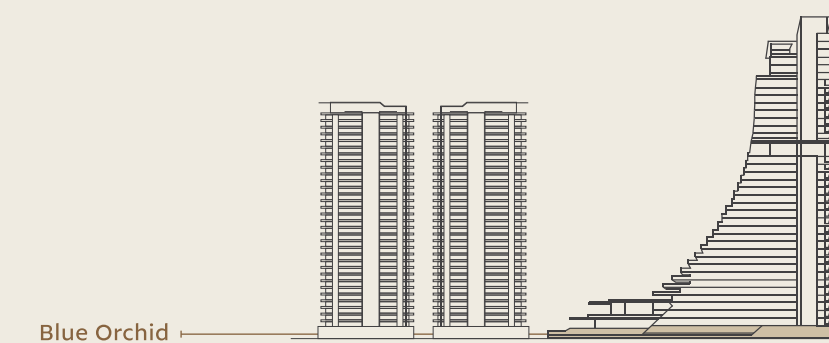
A CONFLUENCE OF SPORTS AND PARTY SPACES

THE IDEAL SETTING FOR TOGETHERNESS



A CLUBHOUSE FOR THE AGES

Urban lifestyle deserves a hub that pampers everyone to the fullest. Blue Orchid, the clubhouse at Gateway Towers II, is the space that enriches luxury like never before.





THE GATEWAY TO SUPERIOR EXPERIENCES

Enter the world of the Blue Orchid through an entrance that is an admirable gateway on its own.



BADMINTON COURT
Swing your rackets and partake in an endless rally of joyous enthusiasm.

SQUASH COURT
Smash the ball with all your strength and destress like a pro.

WORK-FROM-HOME LOUNGE
Find the perfect work-life balance in a focused and supportive environment.





TODDLERS' PLAY AREA

Our indoor mini playland welcomes the little ones to enjoy a vibrant time in a safe zone that is always open for their games, laughs, and a hundred memories.

DANCE / HOBBY STUDIO

Move to the beats of your heart in a place that takes you closer to it.

LOUNGE

A simple yet thoughtful space, this exclusive lounge has WiFi connectivity and a barbecue pit to nurture some special connections.



MULTIPURPOSE
HALL & KITCHEN

Gather with your closest friends and family, and make a million memories.

PARTY TERRACE

Bring the party home to an exclusive area for all things fun.

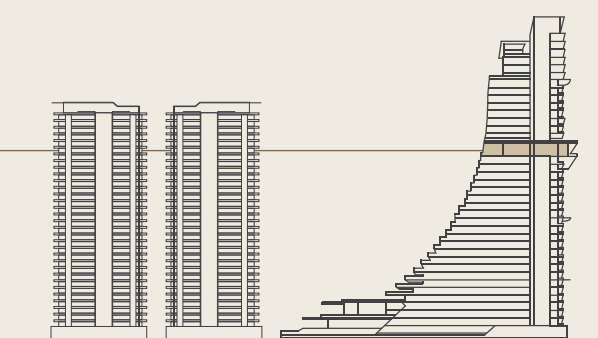




THE SUNSET LOUNGE - FOR HIGHER-LEVEL INDULGENCES

When you choose to live at Pune's tallest address of luxury living, your celebrations also deserve to rise higher. This peerless Sunset Lounge, located on the 25th floor, opens up an avenue for all your special occasions, and a massive banquet hall will play the perfect host here.

Sunset Lounge

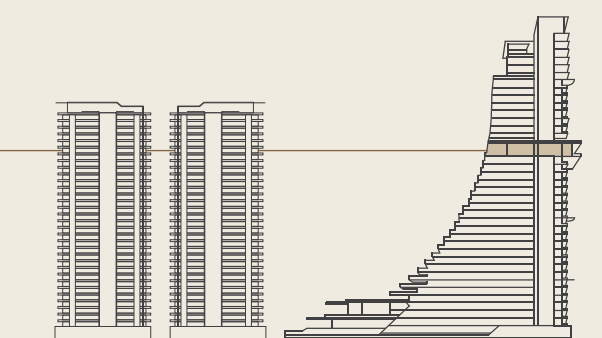




A COMMUNITY POD FOR THE FINER MOMENTS

By the Sunset Lounge, indulge in a lavish space designed to promise you a holistic experience with a stunning view. Equipped with a barbecue pit, a temperature-controlled pool, high-speed WiFi, and a beautifully-designed seating area, enjoy the best of moments with your loved ones in this vast space.

Sunset Lounge / Community Pod





SAPPHIRE

A ROOFTOP THAT ELEVATES
THE TWIN TOWERS

—
The desire to sweat it out, then find a sense
of calm from within, is rarely satiated.
The Oasis lives up to its name and makes
this rare feeling a reality.



SPLIT ACROSS TWO ZONES: SAPPHIRE 102 & SAPPHIRE 103

SAPPHIRE 102 OFFERS A WORLD OF SPORTS & GAMES

SAPPHIRE 103 IS HOME TO ENTERTAINMENT & WELLNESS

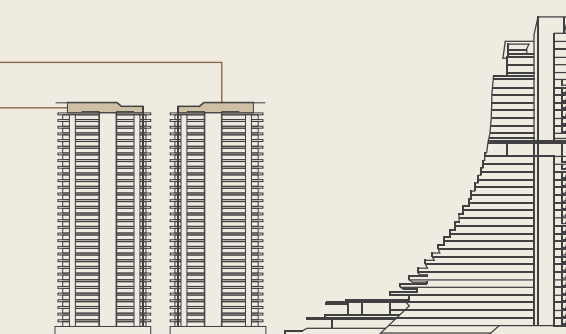


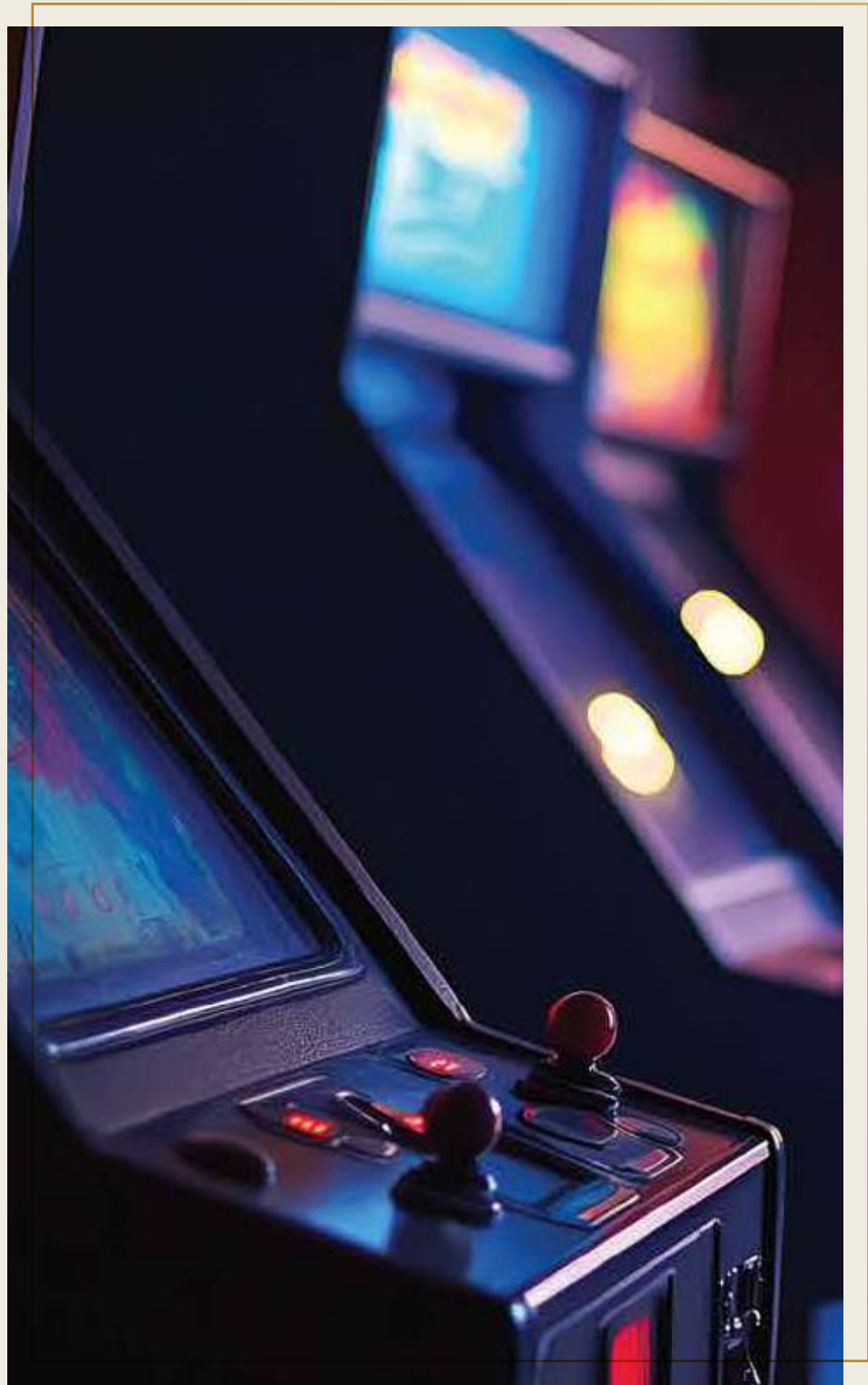
THE PEAK IS YOURS

Here, you live a life that is higher than most. And this height is complemented with the grandest-ever twin tower rooftop, jewelled with over 10 amenities, crafted specially for your luxurious indulgences.

Sapphire 102 (Tower 102)

Sapphire 103 (Tower 103)





SAPPHIRE 102

From kids to adults, everyone enjoys a good activity. At Gateway Towers II, this desire is fulfilled in an equally grand manner. Sapphire 102 offers a huge gaming area for every age group, so they can find and celebrate their cherished activity.

TABLE TENNIS

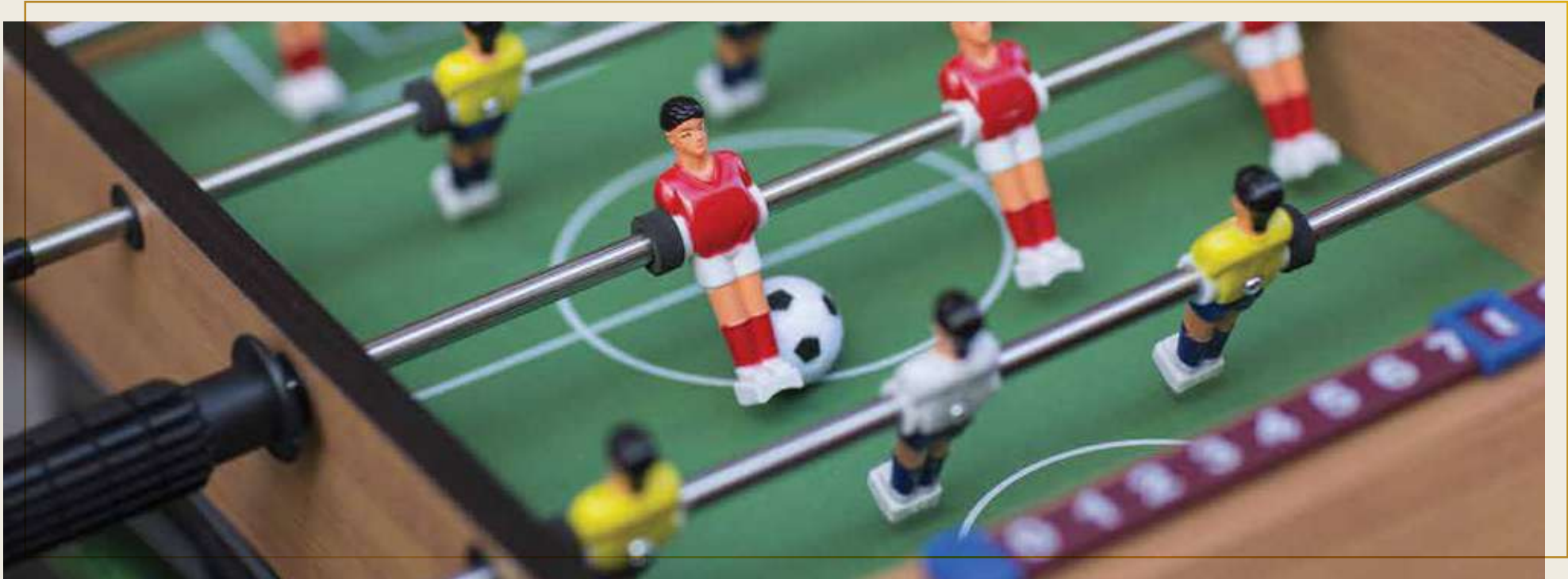
Serve the ball across the table and get your competitive colours out with your friends.

BOARD GAMES

Welcome back the good old days of sitting down with your family and experiencing the thrill of chess, carrom and cards.

GAMES ARCADE

A play area packed with electronic games for kids, promises laughter and memories that will last you a lifetime.



SAPPHIRE 102



AIR HOCKEY

Sling along the puck in a playful round of air hockey with your buddies.

POOL

Stay ahead of the 8-ball as you wield the stick and pot the balls perfectly.

FUSSBALL

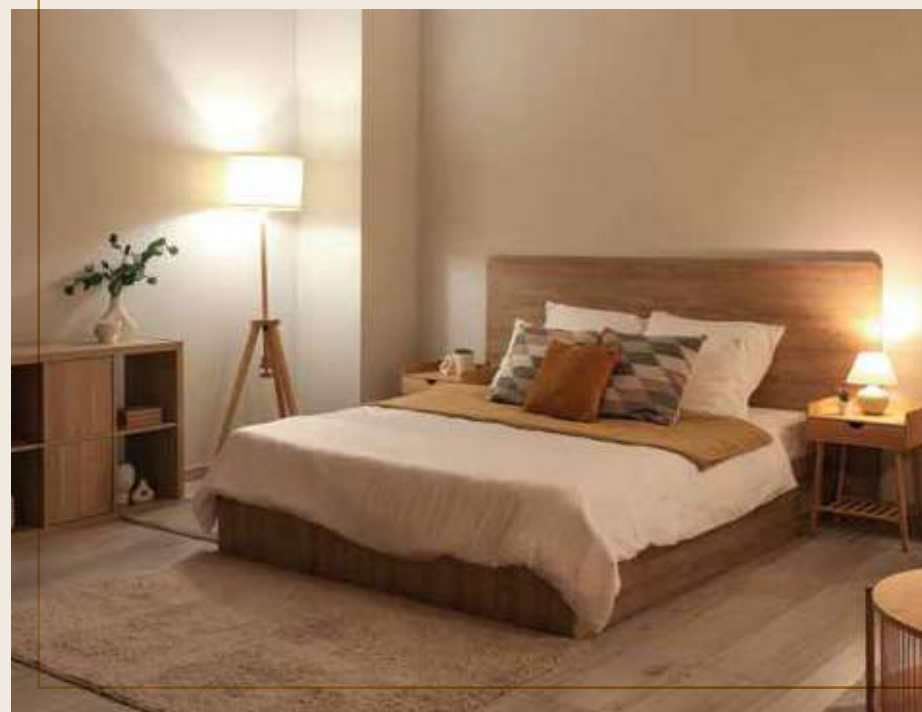
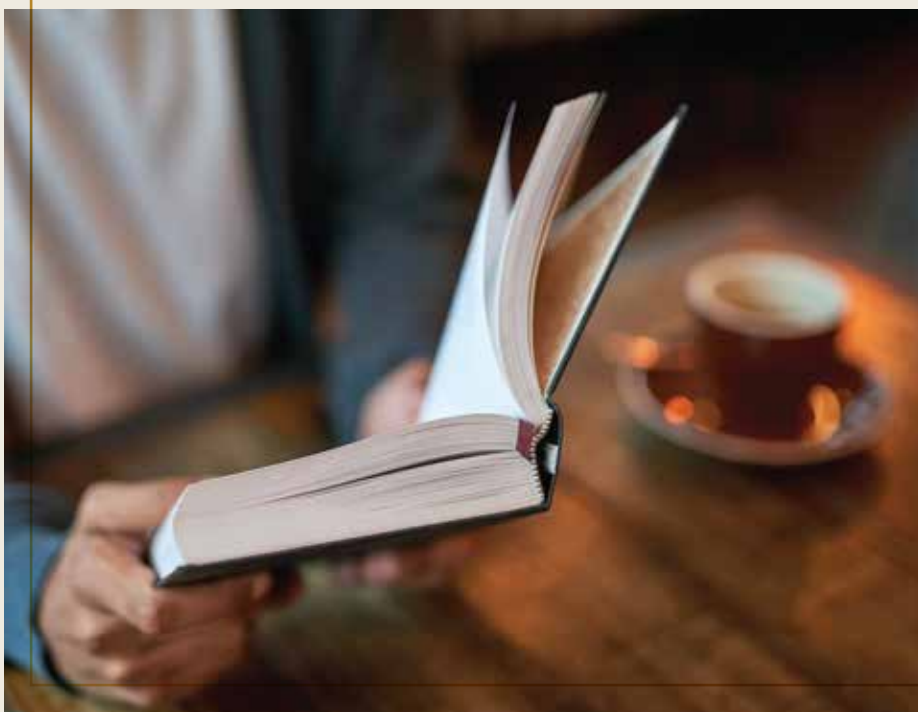
Bring out the football fan in you with this table game where you score goals and have fun.





SAPPHIRE 103

Comfort comes in many different colours. At Gateway Towers II, you live the luxury of owning every shade of it. Sapphire 103 is home to elegant leisure that takes the form of a mini theatre, a reading lounge and cosy guest rooms. So, you can choose to live at your pace, your terms, and our luxury!



MINI THEATRE

Sit back and let the magic of an exclusive experience come your way in this comfy 30-seater.

GUEST ROOMS

Host your loved ones at this warm and cosy accommodation, making them feel special.

READING LOUNGE

The good old world of books is a great place to be a part of, something this lounge makes a reality for you.



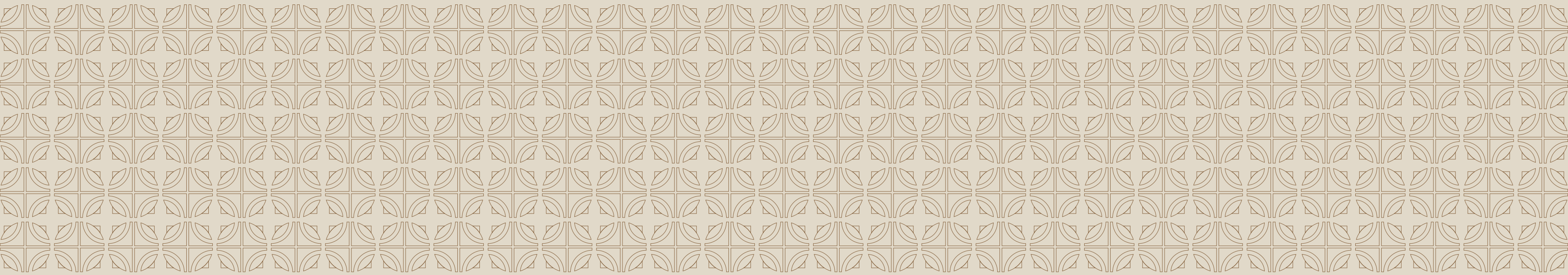


SAPPHIRE 103 LUXURY DEN

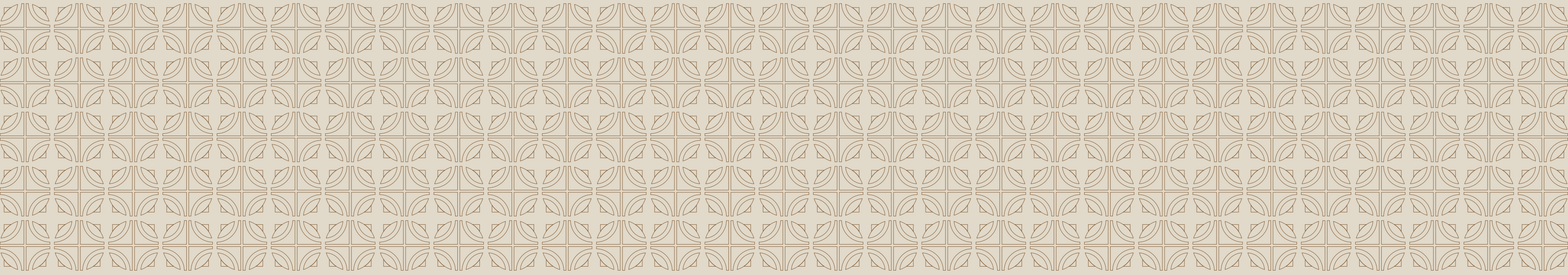
**A COSY SPACE FOR
GET-TOGETHERS.
HIGH ON LUXURY
AND INDULGENCE.**

At Sapphire 102, celebrate the smallest and the shiniest moments with your loved ones.

This Luxury Den comes with a bar, a card table, and a TV set-up. So, invite your friends for a wholesome time with the best of arrangements!



A space that has a world in it, is not for everyone.
Here, it becomes a habit.





A LUXURIOUS HABIT SURROUNDED BY 400 ACRES OF HASSLE-FREE LIVING

Yes, with Gateway Towers II, you become a part of 400 acres of hassle-free living at Amanora Park Town. Located at Hadapsar, Pune, Amanora Park Town is Maharashtra's first real township and has shaped a way of urban living that is self-sufficient, smart, sustainable and satisfying.

A journey that started back in 2007, has today become a benchmark of global living in Pune and is home to 35,000+ citizens already. While the offerings vary from super-luxurious residences to affordable luxury, each home comes with the Amanora Advantage of township living.

Whether it's the basic infrastructure for a comfortable living or a destination of utility and entertainment for the perfect lifestyle, Amanora Park Town has the best of everything.



Finest Infrastructure

Assured water and power

Water filtration & treatment plant

Private fire station

Round-the-clock security

Finest Sustainability

Sewage treatment plant

Two exclusive lakes

26-Acre central greens

World's first temple of environment

Finest Global Lifestyle

Amanora Club with elite membership

Amanora Mall for immersive shopping, dining and fun experiences

Sports arena

Finest Convenience

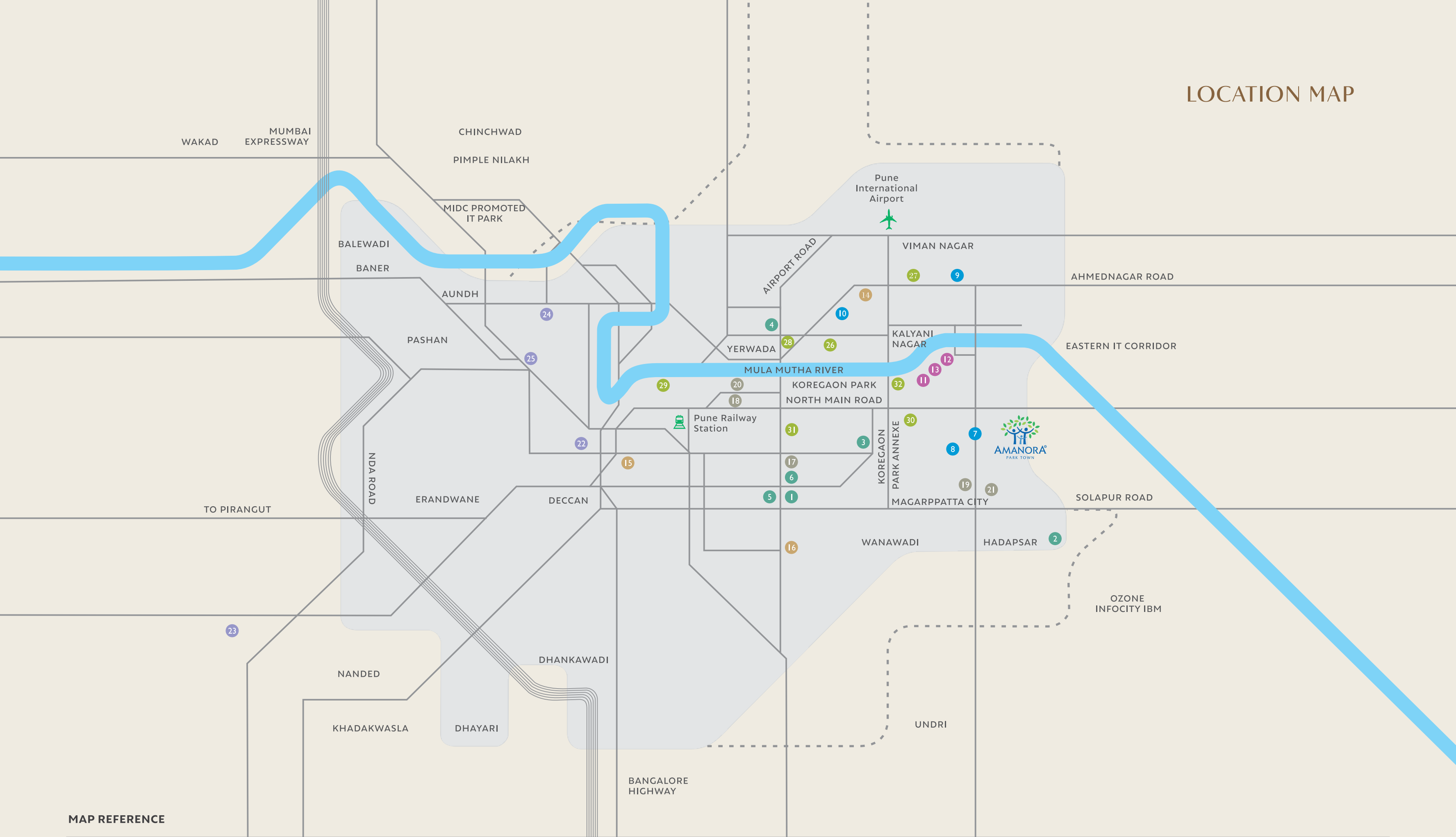
3 Operational schools within the township

Safe walk-to-school concept

24 x 7 Help desk

Separate township management company

LOCATION MAP



MAP REFERENCE

RECREATION AND RELAXATION	RETAIL	DINING AND NIGHTLIFE	HISTORICAL SITES	MEDICAL SERVICES	EDUCATION	HOSPITALITY	KEY
<div>1</div> Empress Garden	<div>7</div> Town Centre Amanora	<div>11</div> ABC Farm	<div>14</div> Aga Khan Palace	<div>17</div> Inlaks and Budhrani Hospital	<div>22</div> Fergusson College	<div>26</div> Grand Hyatt	<div>—</div> Road
<div>2</div> Gliding Centre	<div>8</div> Magarpatta City Mall	<div>12</div> Hard Rock Café	<div>15</div> Shaniwar Wada	<div>18</div> Jehangir Hospital	<div>23</div> National Defence Academy	<div>27</div> Hyatt Regency	<div>≡≡≡</div> Six Lane Expressway
<div>3</div> Osho Meditation Resort	<div>9</div> Phoenix Market City Mall	<div>13</div> Stone Water Grill	<div>16</div> Shinde Chatri	<div>19</div> Noble Hospital	<div>24</div> Pune University	<div>28</div> J. W. Marriott	<div>—</div> River
<div>4</div> Pune Golf Course	<div>10</div> Ishanya Mall			<div>20</div> Ruby Hall Clinic	<div>25</div> Symbiosis University	<div>29</div> Le Meridien	<div>----</div> City Limits
<div>5</div> Race Course				<div>21</div> Sahyadri Hospital		<div>30</div> Oakwood Premier	
<div>6</div> RSI Golf Course						<div>31</div> Taj Blue Diamond	
						<div>32</div> Westin	



PR1261012500749
maharera.it.mahaonline.gov.in



P52100079477
maharera.it.mahaonline.gov.in



AMANORA PARK TOWN

Amanora Magarpatta Road, Hadapsar, Pune 411028.

Call 97670 12345 | www.amanora.com

Disclaimer: The contents of this brochure are purely conceptual and have no legal binding on us.
The developer reserves the right to amend the layout, number of floors, number of office spaces,
sizes, elevation, colour scheme, amenities and specifications.

The stock images / views used in the brochure are for representation purpose only.